

Topic

Reproduction in Human Being

From : Neeraj

Class : VIII-A

Subject : Science

Male Reproductive Organs

- The male reproductive organs include a pair of testes (singular, testis), two spermducts and a penis. The testes produce the male gametes called sperms. Millions of sperms are produced by the testes. Look at 9.2 which shown the picture of a sperm. Though sperms are very small in size, each has a head, a middle piece and a tail. Does it appear to be a single cell ? Indeed, each sperm is single cell with all the usual cell components.

Example

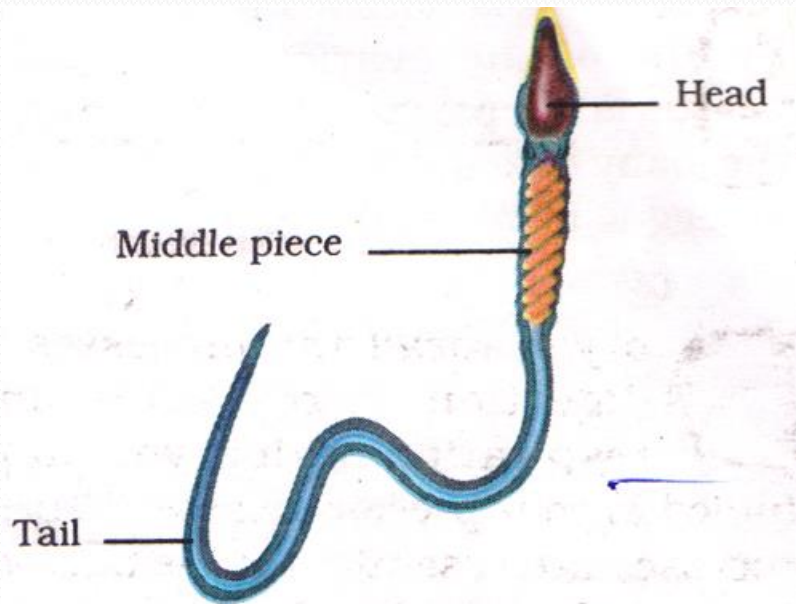
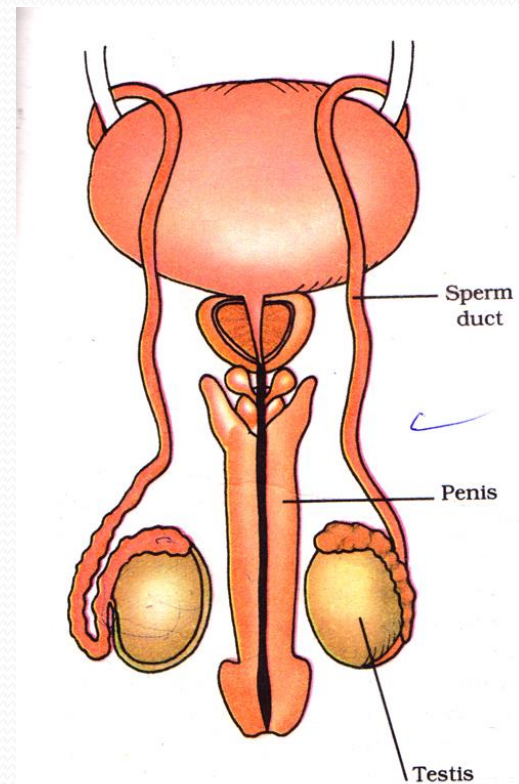


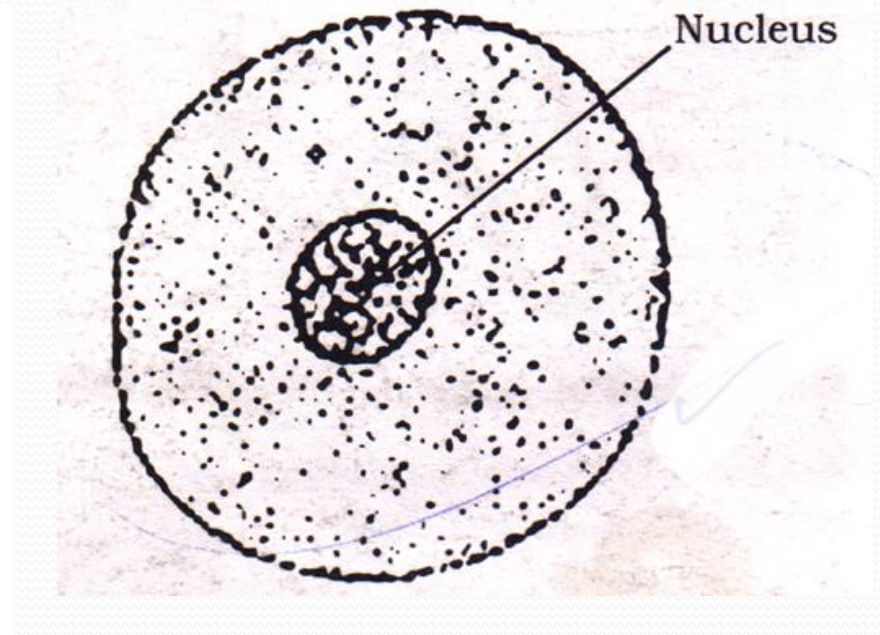
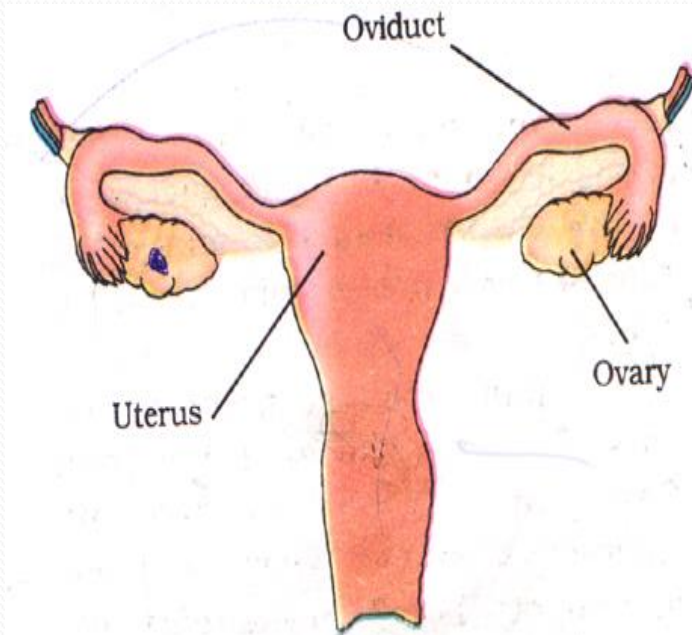
Fig. 9.2 : Human sperm



Female Reproductive Organs

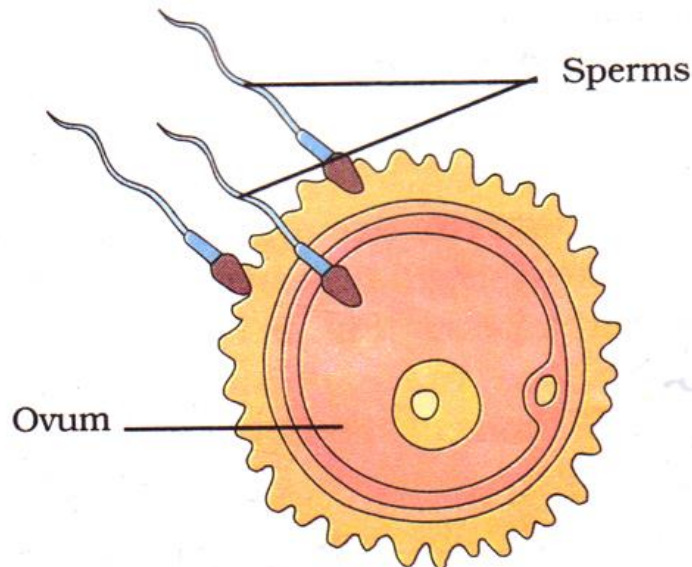
- The female reproductive organs are a pair of ovaries, oviducts (fallopian-tubes) and the uterus. The ovary produces female gametes called ova (eggs) in human beings, a single matured egg is released into the oviduct by one of the ovaries every month. Uterus is the part where development of the baby takes place. Like the sperm, an egg is also a single cell.

Example



Fertilisation

- The first step in the process of reproduction is the fusion of a sperm and an ovum. When sperms come in contact with an egg, one of the sperms may fuse with the egg. Such fusion of the egg and the sperm is called **fertilisation**.



Type of Fertilisation

1. Fertilisation which takes place inside the female body is called inter fertilisation
2. This type of fertilisation in which the fusion of a male and female gamete takes place outside the body of the female is called external fertilisation

Asexual Reproduction

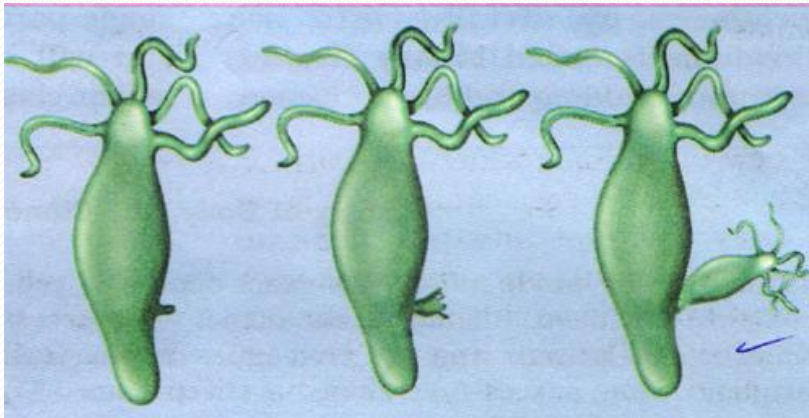
This type of reproduction in which only a single parent is involved is called asexual reproduction

Type of Asexual Reproduction

1. Since new individuals develop from the buds in hydra, this type of asexual reproduction is called **budding**.
2. This type of asexual reproduction in which an animal reproduces by dividing into two individuals is called **binary fission**.

Example

Examp. 1



Examp. 2

